

CLICKCLAD INSTALLATION TIPS

ClickClad Composite Cladding



What is ClickClad Composite Cladding?

Composite Cladding is a combination of recycled natural wood fibres (55%), recycled HDPE (35%) and additives moulded to create a cladding board.

The ClickClad system doesn't need clips, and is secured with a screw before the subsequent board clicks over, to create a hidden fixing.



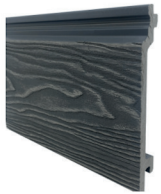
Does composite cladding have batch variation?

Whilst we ensure every individual order has batch matched board colouration, orders placed at different times may result in a different subsequent batch being purchased.



What components are required to complete an install?

ClickClad Board



Available in:

- ✓ 5 Colours
- ✓ 3.6m lengths

Edging Trims



Used for:

- ✓ Door/window reveals
- ✓ Corner Finishing

Starter Clips



Used for:

Securing 1st board

Battens (for subframe)



Suitable material:

- ✓ Timber
- ✓ Recycled Plastic

What tools will I need?



ELECTRIC SAW



SPIRIT LEVEL



SAFETY PPE



HAND DRILL



TAPE



SQUARE EDGE



How can I work out the number of boards?

Measure the width and length of the area to be cladded to calculate the square meterage needed.

Use the guide below to calculate the number of boards required.

SQM to No of boards

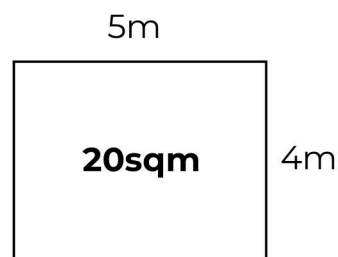
$\text{SQM} / 0.45 = \text{No of boards}$

Example

$5\text{m} \times 4\text{m} = 20\text{sqm}$.

$20\text{sqm} / 0.45 = 44.4$

45 boards minimum needed
(not allowing 5-10% for wastage)



Range	10m2	20m2	30m2	40m2	50m2
ClickClad	23	45	67	89	112

Note: Always round up the number of boards, and include 5%-10% for wastage



What should I use for my subframe?

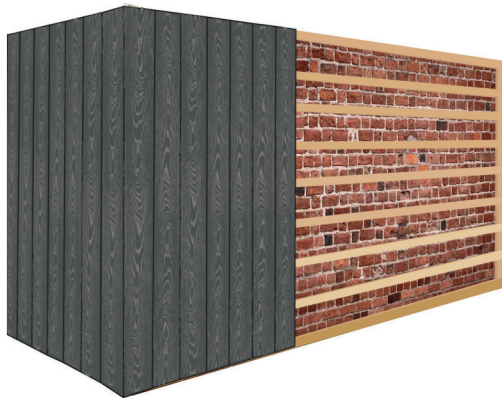
ClickClad should be installed on 2x1 (or wider) batten sub-frame and never straight onto a wall or flat surface (such as plyboard) to allow for adequate ventilation behind the product
Battens should be treated timber or recycled plastic.

What centres should I use?

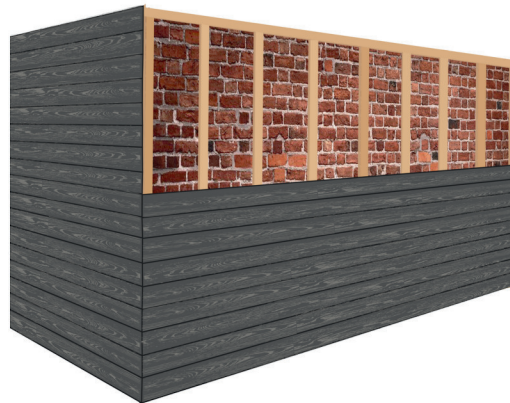
Battens should be installed 300-400mm centres, with tighter centres should the cladding be installed in an area that may experience a high wind load.

Which orientation should I batten?

Orientation of battens should be perpendicular to the orientation of board installation (see example below)



Vertical Board
Horizontal Subframe



Horizontal Board
Vertical Subframe



How do I store my cladding before installation?

Do's:

- ✓ Boards should be stored flat off the floor, on supports no more than 300mm apart.
- ✓ Boards should be covered to prevent weather and UV fade on external boards .
- ✓ Boards should be stored interlocked to prevent bowing.

Dont's:

- ✗ Do not store directly on the ground/ upright.
- ✗ Do not drag the boards on rough surfaces or across other boards, this could cause damage to the boards.
- ✗ Do not leave metal or tools on the boards for long periods.
- ✗ Do not leave uncovered.



Do I need to leave expansion gaps?

Composite Cladding will expand and contract as the climate changes. If there is no room for the boards to expand, they will push against each other or the wall and eventually they will develop cracks, or become unsecure.

What expansion gap do you need to leave around perimeter?

Leave a 10mm expansion gap at the end of each run of boards (this is usually covered with the L trims)

What expansion gap is required board to board?

Leave a 5mm expansion gap between the end of each board at end on end joins

Can I install my boards straight away?

Boards should be left outside for 24 hours prior to fitting to allow for boards to acclimatise before fitting.

End/End Joins:

Install a double batten/wider batten so the end of each board can be securely fixed to the sub-frame.



What is the process for main installation?

- 1 Use decking starter clips, installed on every batten, to hang the first board on.
- 2 Pilot drill through the recess section at intervals to match the batten positioning.
- 3 Secure the boards to EVERY batten using 4-6mm flat headed screws, length to suit the installed sub-frame.
- 4 Once a board is installed, overlap the next board and repeat fixation method.
- 5 Do not leave a board overhanging more than 5mm on any batten - all board ends must be fixed to secure the board and prevent bowing.

Allow boards to acclimatise for 24hrs before installation



Do I need to maintain my cladding?

Your cladding never needs to be painted or sealed but it is important to have a cleaning programme.

How do I clean if soiled?

ClickClad boards can stain if exposed to harsh staining fluids and should be cleaned with hot and soapy water to prevent harsh materials soaking into the boards.

How can I fixed a scratched board?

Being constructed of wood and HDPE, ClickClad boards are open to scratching from sharp edges.

Should a scratch occur, lightly sanding the area is the best method of removal.

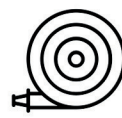
What will I need to clean my cladding?



JET WASH



HOT WATER & SOAP



HOSEPIPE



How do I calculate number of trims ?

Calculate the total linear metres of trim coverage required and divide by 3600mm (length of the trim) and round up to next whole number. Include corners and windows/door reveals.

How do I secure the trim?

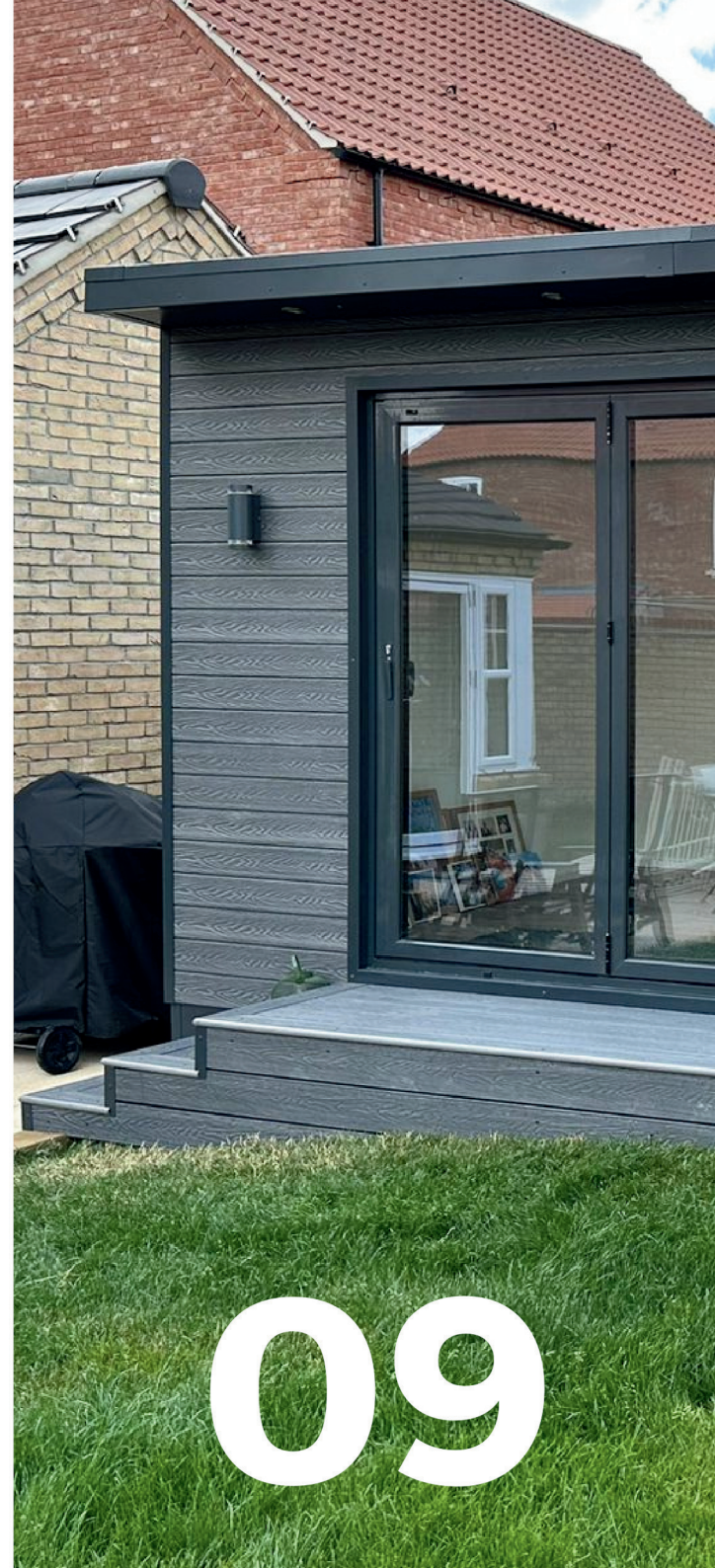
To secure corner trims, we recommend using a strong flexible adhesive for a seamless finish.



Use trims to finish corner joints



Use trims to finish window/door reveals



FADE / WARRANTY

UV Fade

1st Generation cladding boards have natural tree fibres exposed to weathering and UV light.

1st Generation boards will weather and fade in the initial few months of installation with the settled colour no darker than the internal colour of a cut board (Woodgrain side will always start darker to allow for this natural process).

Fade can happen at various rates and extents due to the natural variation of materials in the boards.

Be sure to regularly move furniture in initial months to allow for even weathering.

Warranty

Boards come with a 10 year warranty subject to installation as per the guidance above for splitting, rotting, cracking and manufacture default (not damage due to external forces)

